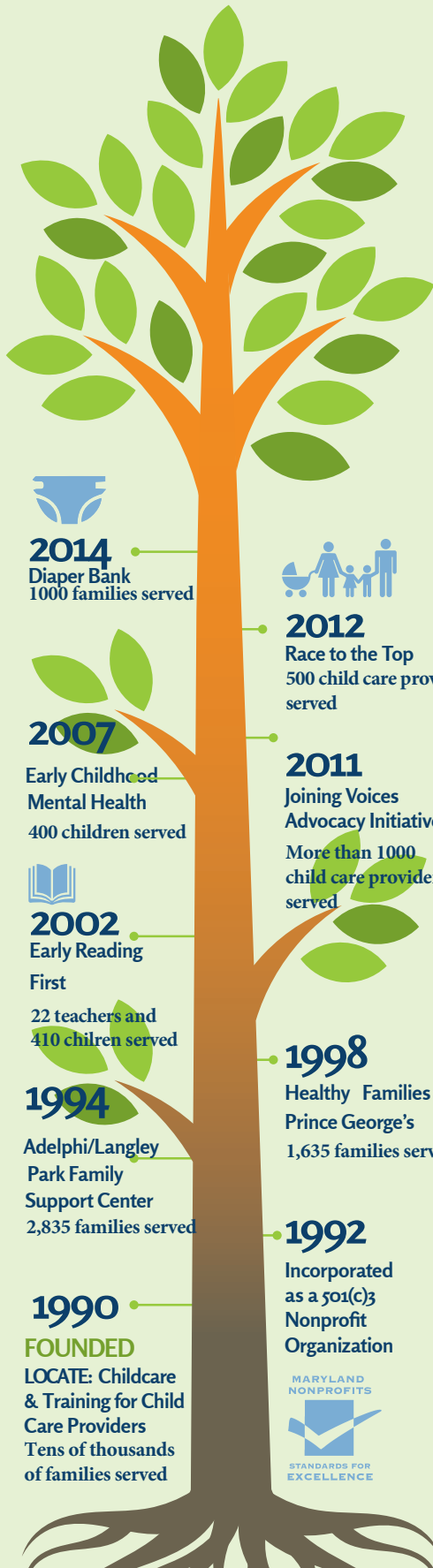
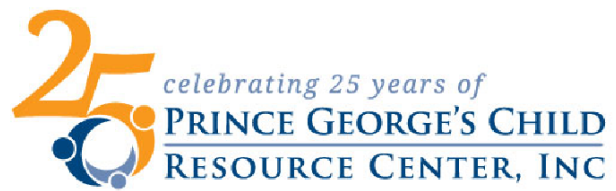


## HOW WE'VE GROWN



For more details about these programs go to [www.childresource.org](http://www.childresource.org).



### DID YOU KNOW?

In some areas of Prince George's County, 20% of adults do not have a diploma, 45% of families' first language is not English, and one in eight families with children under the age of five live below the poverty level.

Children are 'expelled' from child care at a rate six times that of high school. Affected children are set up to fail at each new placement, having been branded 'bad'.

New parents with multiple significant stressors, such as experiences of domestic violence and substance abuse, are less likely to bond with their babies and more likely to abuse or neglect them.

There are 60,000 children under the age of five in Prince George's County. Nearly 2/3 of them are not 'ready to learn' when they begin kindergarten, a gap that is almost never closed and has lifelong negative consequences.

### WHAT IF PGCRC DID NOT EXIST?

12,000 parents that choose child care for their children each year would not have a qualified cadre of professionals from which to choose.

400 children might have been expelled from their child care programs, or forced to endure developmentally inappropriate environments.

Nearly 300 parents would have had no safe environment to learn parenting skills, gain family literacy skills, and pursue their education goals.

1,700 struggling families would have been left to fend for themselves, putting their own children at risk.

### HOW DOES PGCRC MEET THE NEED?

**Educate** child care providers and parents with relevant knowledge, approaches, and tools to improve the quality, effectiveness, and appropriateness of their care for children through workshops, peer-groups, and accessible resources

**Coach** individual child care providers in assessing, developing, and implementing organizational practices that ensure quality care, regulatory compliance, and equitable access to child care for the community

**Connect** family members with community support systems and provide ongoing, safe learning environments that enable them to thrive as parents and community members

**Provide** case management services to individual families to support child care success through consultation and referral to resources

**Mobilize** community resources and assets through policy advocacy, public engagement, organizing and community education to build awareness and community capacity to support quality, accessible child care for all.