

July
2023

THE FSC FLYER

Family Support Center Prince George's
(formerly Adelphi/Langley Park Family Support Center)



Celebrating America!

WHAT'S INSIDE:

- A Message From Mariela Hakans, Our Family Support Center Director
- News From Our Center
- Participant Of The Month
- Helpful Resources
- Celebrating America!
- Shout Outs!
- Calendar of Events

A MESSAGE FROM MARIELA

Hello all!

This month I am reflecting on my journey here in the U.S. I am originally from Bolivia and came here when I was very little. I, like many, learned English in ESL classes in school and I can relate to the experiences of many of our families who come to this country not knowing the language. We are happy to be able to give our families the opportunity to learn English and be successful in this country.

We are looking forward to beginning our Summer Session of Adult Education and welcoming our families back from break!

Mariela





DESSALINA ROBERTS



BIENVENIDA JAIMES

CHILD DEVELOPMENT CLASSROOM

The theme for the child development classroom this month is Summer Fun! We will learn about healthy fruit options to keep us cool and we are going to create fun arts and crafts together. The book that we will be highlighting will be "One Is A Snail, Ten Is A Crab", by April Sayre. This story highlights a variety of summer-themed animals, including crabs, snails, seagulls, and more!

Reading this book is a wonderful opportunity to increase early emergent reading skills and to develop mathematical skills through learning how to count!

July Birthdays:

Eliu 7/2

Wilson 7/10

Dylan 7/12

Fany 7/17

Jacob 7/21



KATHIA DONALICIO

SERVICE COORDINATION

This month we are focusing on informing our families about all of the summer activities in the community including Summer Programs. We are also planning activities such as group field trips, participation in various PG Library Summer activities, and more.

During the last week of the month, our participants will be learning about Employment Readiness, exploring the process of how to get ready to find a job for themselves.

See calendar for dates!

July Birthdays:

Johanna 7/13





DR. SUSIE MCPHILOMY

ADULT EDUCATION CLASSROOM

Summer has been a busy time for our participants! They have been actively involved in the life of their families, taking care of their children, celebrating American holidays, attending different activities and events at Child Resource Connect, and staying on top of their studies!

This month is especially important because they will have sessions on employment readiness. Our participants will acquire the necessary tools to identify their skills, find jobs, and be prepared for mock interviews. Each day our learners are getting closer to fulfilling their American Dream!

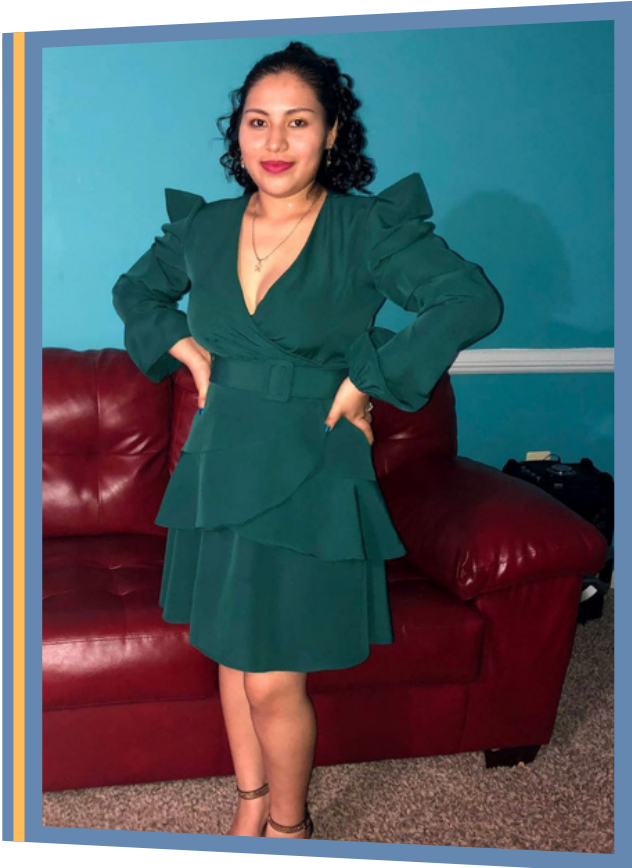


LOIS DYER

OUR STORY IN NUMBERS

- **Participants Served: 30**
- **Children Served: 34**
- **Adult Ed. Activities: 59**
- **Life Skills Ed. Activities: 70**
- **Parent-Child Activities: 124**
- **Social Support Activities: 113**
- **In-Person Circle Times: 5**
- **Diapers Delivered: 1750**

PARTICIPANT OF THE MONTH: TELMA



Telma truly deserves the title of Participant of the month! She is diligent, always prepared and resourceful in class. She is very helpful and does her best to help her classmates and the teacher! Her positive attitude and personality radiate a good vibe and high energy during the class sessions! Telma is a very responsible participant that has shown commitment since she started in the program. She is always willing to participate in any activity we organize for the families. She even wants to start attending classes in person this month. Thank you Telma! You are much loved and appreciated!

HELPFUL RESOURCES

PRINCE GEORGE'S COUNTY PARKS & RECREATION - SWIMMING LESSONS:

[HTTPS://WWW.PGPARKS.COM/ACTIVITIES-EVENTS/AQUATICS](https://www.pgparks.com/activities-events/aquatics)

PGMLS SUMMER MEALS:

[HTTPS://PGCMLS.INFO/EVENT/8769749](https://pgcmls.info/event/8769749)

PRINCE GEORGE'S COMMUNITY COLLEGE - ESL FALL 2023 REGISTRATION:

[HTTPS://WWW.PGCC.EDU/GO/ADULTEDUCATIONESL/](https://www.pgcc.edu/go/adulteducation/esl/)

WHY SWIMMING SHOULD BE THE FIRST SPORT YOUR CHILD LEARNS:

[HTTPS://WWW.HEALTHYCHILDREN.ORG/ENGLISH/TIPS-TOOLS/ASK-THE-PEDIATRICIAN/PAGES/WHAT-IS-THE-BEST-FIRST-SPORT-FOR-KIDS.ASPX](https://www.healthychildren.org/english/tips-tools/ask-the-pediatrician/pages/what-is-the-best-first-sport-for-kids.aspx)

EXECUTIVE DIRECTOR'S CORNER

I recently asked my team of leaders what celebrating Independence Day means to them. It brought up a lot of feelings. Some of us were born in the US, and spent our younger years seeing our country through patriotic, rose colored glasses. We now see a lot of injustice and inequity that makes our patriotism much more complicated. Some of us were born in the US, but were never blind to the injustices and inequities because of direct experiences. And some came to the US from other countries. One of my colleagues shared that, on one hand, her family is much better off than if they had stayed in their country. On the other hand, those injustices and inequities come up for her, too.

So what do we do with these complicated feelings we have? America has opportunity and freedom - but not equally for all. It makes me think that I am grateful for so many different voices that come together to celebrate what is good, but also not settle for what is not good. I'll keep standing up for what is right...let's do that together. Then we will celebrate an even better America!

Best,

Jennifer Iverson
Executive Director

FSC IN-HOUSE RESOURCES

FSC CAR SEAT DISTRIBUTION:

FOR MORE INFORMATION ON CAR SEATS OR IF YOU HAVE ANY QUESTIONS, PLEASE CONTACT JENIFFER AT [JHERNANDEZ@PGCRC.ORG](mailto:jhernandez@pgcrc.org) OR PLEASE CALL 301-431-6210, EXTENSION 1100.

PROGRAMA DE DISTRIBUCION DE SILLAS DE AUTO:

PARA OBTENER MÁS INFORMACIÓN SOBRE LOS ASIENTOS PARA AUTOMÓVILES O SI TIENE ALGUNA PREGUNTA, CONTÁCTE A JENIFFER AL CORREO [JHERNANDEZ@PGCRC.ORG](mailto:jhernandez@pgcrc.org) O LLAME AL 301-431-6210, EXTENSIÓN 1100.

Field Trip Fun!

Thanks to all who participated in our field Trip Day!



July 2023



8908 RIGGS RD. ADELPHI, MD 20784

SUN	MON	TUE	WED	THURS	FRI	SAT
						1
2	3	4  ***** 4th of July CENTER CLOSED	5  CLASSES RESUME 8 - 11 AM ESL/ABE CLASS 12:00 - 3:00 PM ESL/ABE CLASS	6  8-11 AM ESL CLASS/DISTANCE LEARNING FOR TRANSITIONS-HIGH ESL/ABE/DIPLOMA PREP 11:15 - 11:45 PACT	7  11:15 - 11:45AM CIRCLE TIME	8
9	10  8 - 11 AM VIRTUAL ESL/ABE CLASS 12:00 - 3:00 PM VIRTUAL ESL/ABE CLASS	11  8-11 AM ESL CLASS/DISTANCE LEARNING FOR TRANSITIONS-HIGH ESL/ABE/DIPLOMA PREP 11:15 - 11:45 PACT	12  8 - 11 AM ESL/ABE CLASS 12:00 - 3:00 PM ESL/ABE CLASS	13  8-11 AM ESL CLASS/DISTANCE LEARNING FOR TRANSITIONS-HIGH ESL/ABE/DIPLOMA PREP 11:15 - 11:45 PACT	14  10:00AM - 11:00AM PARENT SUPPORT GROUP 11:15 - 11:45AM CIRCLE TIME	15
16	17  8 - 11 AM VIRTUAL ESL/ABE CLASS 12:00 - 3:00 PM VIRTUAL ESL/ABE CLASS	18  8-11 AM ESL CLASS/DISTANCE LEARNING FOR TRANSITIONS-HIGH ESL/ABE/DIPLOMA PREP 11:15 - 11:45 PACT	19  8 - 11 AM ESL/ABE CLASS 12:00 - 3:00 PM ESL/ABE CLASS	20  ADVISORY BOARD 8-11 AM ESL CLASS/DISTANCE LEARNING FOR TRANSITIONS-HIGH ESL/ABE/DIPLOMA PREP 11:15 - 11:45 PACT	21  11:15 - 11:45AM CIRCLE TIME	22
23/30	24/31  8 - 11 AM VIRTUAL ESL/ABE CLASS 12:00 - 3:00 PM VIRTUAL ESL/ABE CLASS	25  8-11 AM ESL CLASS/DISTANCE LEARNING FOR TRANSITIONS-HIGH ESL/ABE/DIPLOMA PREP 10:00AM-11:00AM EMPLOYMENT READINESS 11:15 - 11:45 PACT	26  10:00AM - 12:00PM FIELD TRIP 8 - 11 AM ESL/ABE CLASS 12:00 - 3:00 PM ESL/ABE CLASS	27  8-11 AM ESL CLASS/DISTANCE LEARNING FOR TRANSITIONS-HIGH ESL/ABE/DIPLOMA PREP 10:00AM-11:00AM EMPLOYMENT READINESS 11:15 - 11:45 PACT	28  11:15 - 11:45AM CIRCLE TIME	29



PRINCE GEORGE'S CHILD
RESOURCE CENTER, INC



Child
Resource
Connect



MARYLAND
FAMILY
NETWORK

Leading Maryland's
Family Support Centers

JULY 4TH
4TH OF JULY
CENTER CLOSED

JULY 5TH
PARTICIPANT CLASSES
RESUME

JULY 14TH
PARENT SUPPORT GROUP
10:00AM - 11:00AM

JULY 20TH
ADVISORY BOARD MEETING
9:00AM - 10:30AM

JULY 25TH & 27TH
EMPLOYMENT READINESS
10:00AM - 11:00AM

JULY 26TH
PARTICIPANT FIELD TRIP
10:00AM -12:00PM