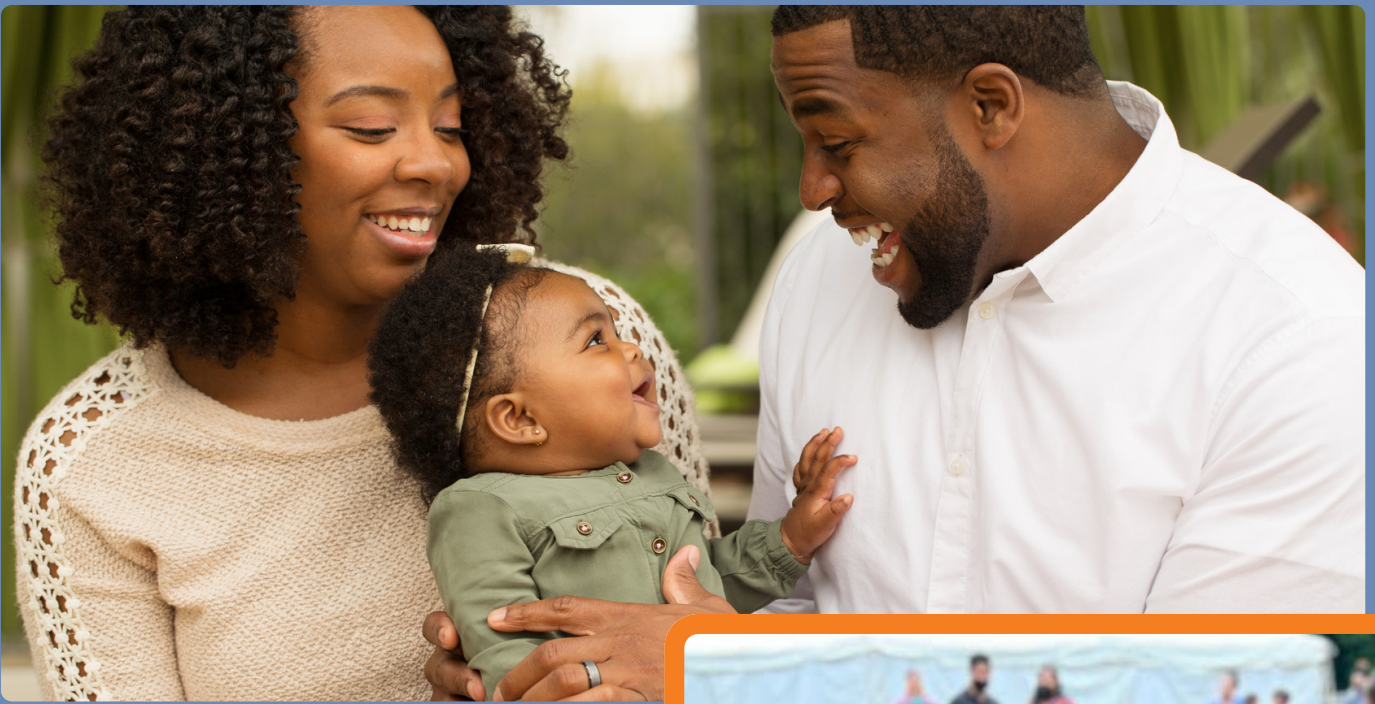




PRINCE GEORGE'S CHILD
RESOURCE CENTER, INC

2022 Annual Report



ADELPHI

8908 Riggs Road
Adelphi, MD 20783
301.431.6210

LARGO

9475 Lottsford Road, Suite 202
Largo, MD 20774
301.772.8420

ANNAPOLIS

44 Calvert Street, Suite 140A
Annapolis, MD 21401
443.782.5001

LINKING CHILDREN, FAMILIES, & COMMUNITIES

This year felt like the organizational equivalent of peeping out from behind a wall or door and wondering, "Is it safe to come out?" And then sure enough, we took some tentative steps, and began to move about the world again with confidence. We found light and hope. This is what propels us.

This was a year of finding our footing after a Pandemic that ravaged the world. And we have done it! PGCRC staff, stakeholders, families and child care providers have found new ways to serve and care and grow. This is evident when you see how much we have accomplished! A staff of more than 35 has built upon our 30-year foundation, and added in some new practices we learned in the virtual world. We grew as individuals, we grew as an organization. We welcomed the Anne Arundel community, and together we moved forward.



Jennifer Iverson
Executive Director



OUR MISSION

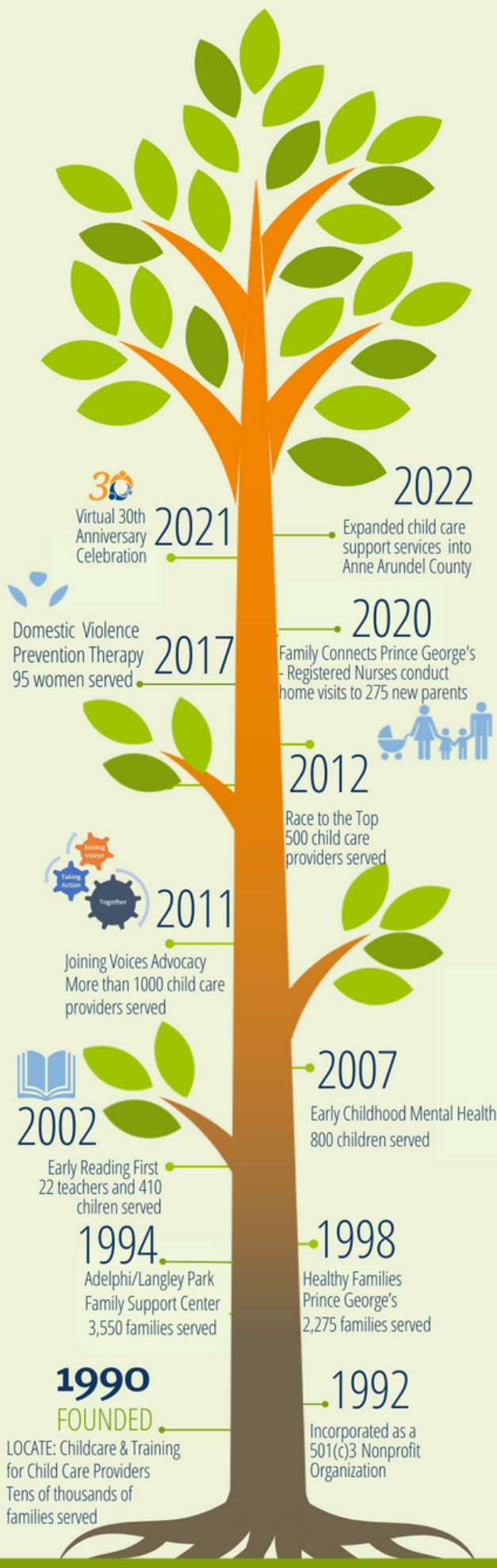
Prince George's Child Resource Center now doing business as Child Resource Connect helps create healthy and nurturing environments for children by supporting their families and educating their caregivers.

Board of Directors

Bradley S. Farrar, Esq., President
Charita Mariner, Vice President
Henry W. Mosley, CPA, Treasurer
Linda Caler, Secretary
Oyinlola Balogun
Shelva Clemons, Ph.D
Shauna Berry Cooke
Shari L. Davis
Tianya Edgerton
Audrey Pabs-Garnon
Ahlisia J. Shipley, Ph.D

HOW WE'VE GROWN

Timeline from 1990-2022



EXPANSION

Prince George's County Child Care Resource and Referral Center was founded in 1990 as one of the three original pilot sites of the Maryland Child Care Resource Network. In the early days, our focus was on supporting child care programs and helping families find quality child care.

Fast forward 31 years and in January 2022, the PGCRC expanded its child care support services into Anne Arundel County. Arundel Child Care Connections (ACCC), who had been providing services with dedication and excellence, ceased as an organization. PGCRC was delighted to hire all five of ACCC's staff, who have continued to seamlessly provide services in Anne Arundel County under PGCRC's umbrella.

Prince George's Child Resource Center is now doing business as Child Resource Connect. Time for a new name that represents our growth and expansion. A name that points to our role as Connector, so that we can continue to serve our community and join with others to dismantle racism and inequitable practices so that every one, people of all ages from all backgrounds and walks of life, can meet their full potential.



PRINCE GEORGE'S CHILD
RESOURCE CENTER, INC.



Child
Resource
Connect



**Launched our
First Annual
Fatherhood
Festival
June 23, 2022**

COMMUNITY PROGRAMS

JOINING VOICES ADVOCACY, empowers parents and providers to educate community stakeholders on the importance of quality early care in breaking the cycle of poverty.

HB 89/SB 480: Child Care Stabilization Act Signed into law on April 21

Thanks to the advocacy and testimonials of child care professionals, legislators were moved to action and signed into law the child care package. A key bill that was passed as an emergency measure to stabilize the child care sector was HB 89/SB 480: Child Care Stabilization Act which span into Fiscal Years 22 and 23 to assist providers facing financial hardship that could put their child care business at risk of closure.



100%

100% participated in
Maryland EXCELS

MARYLAND CHILD CARE BOOST

A pilot program launched to provide support to family child care professionals. The participants participated in 8 training sessions, the training covered onboarding for a Child Care Management System and professional development topics such as marketing, spending and tracking expenses and foundations of leadership.

EARLY CHILDHOOD EDUCATION & COACHING improves the quality of child care for children from socioeconomically diverse backgrounds through professional development and technical assistance opportunities for 2,500 child care professionals each year.



590 CHILD CARE PROVIDERS TRAINED,
RECEIVED TECHNICAL ASSISTANCE AND
COACHING

85%

85% OF WORKSHOP PARTICIPANTS
NOTED THEIR KNOWLEDGE AND
SKILLS “DEFINITELY IMPROVED

98%

98% STRONGLY AGREED THAT
SERVICES RECEIVED HELPED:

- ENHANCE THEIR PROGRAM
- ACHIEVE THEIR GOALS
- TA SPECIALIST/COACH WAS
EFFECTIVE IN ASSISTING THEM
WITH THEIR PROGRAM

FINANCIAL RESILIENCE SERIES

**57 CENTER AND HOME BASED CHILD CARE
PROFESSIONALS COMPLETED THE PROGRAM**

91%

**91% OF THE PARTICIPANTS FELT
MORE COMFORTABLE WITH THE
FINANCIAL POSITION OF THEIR
OPERATIONS FOR THE NEXT SIX
MONTHS**

100%

**100% FELT MORE COMFORTABLE
WITH THEIR PROGRAM’S FINANCIAL
POSITION ACROSS THE NEXT 12-18
MONTHS BECAUSE OF THE PROGRAM
AND FELT MORE CONNECTED TO AN
ECE COMMUNITY OF PROVIDERS**

“I’m so happy for this opportunity. I feel like I’m standing taller already. I look forward to using the tools to build and become stronger while serving our families. ~R. Thompson, Family Child Care Professional”

SPECIAL PROGRAMS

INFANT & EARLY CHILDHOOD MENTAL HEALTH: Project WIN (Wise Intervention Now) addresses the social and emotional needs of children from birth to five years old who are enrolled in family child care, child care centers or informal child care settings in Prince George's and Anne Arundel Counties.



300 REACHED OVER 300 PROVIDERS WITH IECMH MATERIALS



75 REACHED OVER 75 FAMILIES WITH IECMH MATERIALS



389 REACHED OVER 389 CHILDREN THROUGH DIRECT AND INDIRECT SERVICES

IECMH TOOLKIT consists of materials to help support social emotional development in programs. Materials include but not limited to:

- Visual schedules to support learning a routine and sequence of activities
- Books to support emotional understanding and skills
- Social emotional back pack kits providing materials to educate children on the importance of empathy and compassion along with activity cards

Child care programs also benefitted from performances by Wolf Trap and Blue Sky Puppets. Performance provided on-site learning opportunities for children and training opportunities for staff.

FAMILY ENGAGEMENT

Families of children receiving services in child care programs are supported and provided resources by the Family Engagement Specialist. Families are linked to community resources and are provided support with the implementation of their child's action plan. Books and other publications are provided to families for additional support.

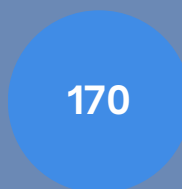


175 SITE VISITS
50 PROGRAMS VISITED

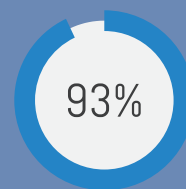


JUDY CENTER PARTNERSHIP

There are currently five Judy Centers in Prince George's County and nine child care programs who have partnered with their local Judy Center. These child care partners receive MSDE approved training on topics they have identified as important to support enhancing their skills and supporting a child's development. **The partnerships reflect Judy Hoyer's vision of professional collaboration and coordination, delivering a broad spectrum of early childhood education programs and family support services for children and families.**



TRAINED



SATISFACTION



26 child care providers trained in The Pyramid Model for Social Emotional Competence in Infants and Young Children. This training allows teachers to learn how to promote and support infant and early childhood mental health and social emotional development of all children. The Pyramid Model takes a tiered public health approach to providing universal supports to all children to promote wellness, targeted supports to those at risk and intensive interventions for those who need them, all supported by an effective workforce.

FAMILY SUPPORT CENTER

The Family Support Center implements a multi-generational approach that promotes kindergarten readiness for children and literacy, basic education, and employment readiness for families. While children engage in classroom activities supervised by our highly qualified child development staff, parents and caregivers participate in our ongoing adult education classes.

Parent Leadership Institute

Two of our participants, Ramzia and Eva were invited as panelists at Maryland Family Network's Parent Leadership Institute to share their journey as Family Support Center participants.



Virtual Father's Day Card Activity

“*Family Support Center staff support us in education with our children, they educate us as mothers. Provide us with many kinds of different information that helps us and our families.* ~ Vicky, Family Support Center participant”

70% OF GOALS
ACHIEVED PER FAMILY



127 CAR SEATS
DISTRIBUTED

77 PARTICIPATING
FAMILIES



232 HEALTH
EDUCATION SERVICES

1,927 ADULT
EDUCATION ACTIVITIES



78 MENTAL
HEALTH SESSIONS

2,715 PARENT &
CHILD ACTIVITIES



74 PARENT
ADVISORY OPPORTUNITIES

HEALTHY FAMILIES PRINCE GEORGE'S



Healthy Families Prince George's provides comprehensive, in-home intervention services to 170 Prince George's families and their young children annually, at no cost to participants.

This program aims to support healthy parent-child relationships from birth, creating strong family bonds and home environments conducive for children to learn, grow, and thrive. This vital program has been accredited since 2003 by Healthy Families America.

FAMILY GOALS

Setting family goals is an essential standard of the Healthy Families America model, and our Family Support Specialists (FSS) strive to ensure that every family has an active goal at all times that is important to the families.

GOAL SPOTLIGHT

- FSS and caregiver discussed how learning to read and write will strengthen her family.
- FSS shared information on classes to learn to read and write.
- Caregiver took the initiative to enroll in classes and now she is excited to start learning.

VIRTUAL PINWHEEL GARDEN 2022



2,055
HOME VISITS



151
FAMILIES



143
CHILDREN SERVED



1,027
REFERRALS

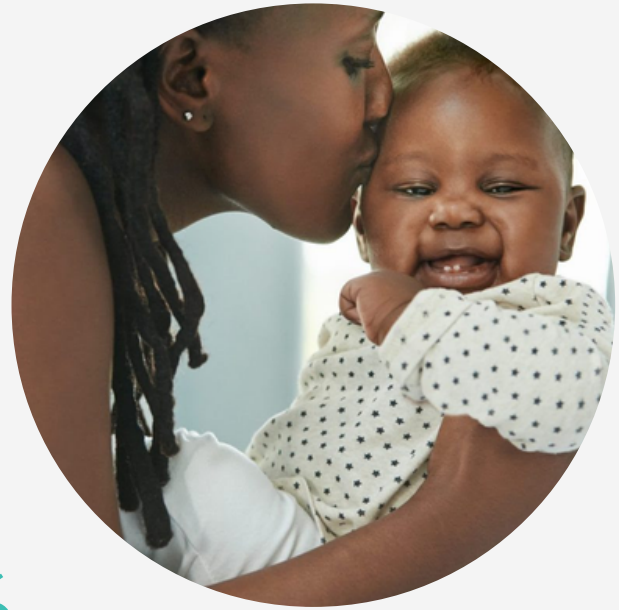
FAMILY CONNECTS PRINCE GEORGE'S



Family Connects Prince George's (FCPG) is an evidence-based home visiting model developed at Duke University that advances the well-being of infants and their families. FCPG ensures that caregivers and infants have a medical home and are provided with appropriate physical- and mental-health screenings, comprehensive assessments, and connections to community resources that meet critical family needs in the first months following childbirth.

28% INCREASED BIRTH POPULATION

While a **28% growth in the birth population** is great news for UMCRRH, for Family Connects Prince George's the rate of increase resulted in a need to increase program capacity in order to meet Family Connects International Key Performance Indicator of providing a home visit to **60% of the birth population**.



Our nurse was patient, kind, respectful, and felt like a good friend that I could trust would give me accurate information. ~Rowan, parent Family Connects Prince George's



380 NURSE
HOME VISITS



380
CAREGIVERS
SERVED



83%

83% Caregivers
Connected to
Referral Services

99%

99% Caregivers
are satisfied with
services received

Financials

Condensed statements of activities for years ended June 30, 2022 and June 30, 2021

The following is a summary of the financial statements incorporated in the annual audit report issued for the years ended June 30, 2022 and June 30, 2021. The complete financial statements and notes are available upon request from Prince George's Child Resource Center.

	2022	2021
SUPPORT AND REVENUES		
Grants & Contracts	\$ 3,103,881	\$ 2,062,237
Nonprofit Partner : Maryland Family Network	897,193	609,889
PPP Loan	-	309,230
Contracts Revenue	27,500	41,000
Earned Revenue	38,817	34,419
Fundraising Events	-	20,586
Membership Dues	3,220	5,835
Individual Giving	22,895.02	24,471
Miscellaneous	605	383
Total Support and Revenues	\$ 4,094,111	\$ 3,108,050

EXPENDITURES		
Program Services	\$ 3,182,734	\$ 2,449,574
Management and General	376,544	287,587
Fundraising	99,199	124,655
Total Expenditures	\$ 3,658,477	\$ 2,716,489
Change in Unrestricted Net Assets	\$ 435,634	\$ 246,234
Beginning Unrestricted Net Assets	1,251,612	1,005,378
Ending Unrestricted Net Assets	\$ 1,687,246	\$ 1,251,612

www.childresource.org

Thank You

We couldn't have done it without the generous support of our staff, stakeholders, donors, and partners.

