



MARYLAND CHILD CARE  
RESOURCE NETWORK

## CHILD CARE DEMOGRAPHICS • 2024

### Maryland Report

*The Maryland Child Care Resource Network and Maryland Family Network, Inc. are co-publishers of this Maryland Report for the Network's Maryland Child Care Demographics Report series. The series includes reports for the State, for each of Maryland's 23 counties and the City of Baltimore.*



MARYLAND  
FAMILY  
NETWORK

### Frequently Requested Child Care Information

Maryland is in the Mid-Atlantic region on the east coast of the U.S., bordering Pennsylvania, Delaware, Washington, D.C., Virginia, and West Virginia. It is approximately 9,700 square miles in size, ranking 42 out of America's 50 states, and its population of approximately 6.2 million people places Maryland 18th in population amongst America's 50 states.

Maryland's economy includes technology, biosciences, manufacturing, and international trade. Of the approximately 3.0 million civilian employees, the state employs approximately 2.6 million people via 177,000 businesses. Approximately 82% are in the private sector, with the largest concentrations in trade, transportation, and utilities and education and health services. The rest are in local government (9%), state government (4%) and federal government (6%).

Major employers include the University System of Maryland, Johns Hopkins Health System, Amazon, University of Maryland Medical System, Ahold Dehaize supermarkets (Giant, Food Lion, Martin's), National Institutes of Health, Johns Hopkins University, MedStar Health, Northrop Grumman Mission Systems, Walmart/Sam's Club, U.S. Social Security Administration, and the U.S. Food and Drug Administration. Major military employers include Fort George G. Meade, Naval Air Station Patuxent River, Fort Detrick Campus, Aberdeen Proving Ground, and Joint Base Andrews Naval Air Facility Washington. Other federal agencies located in Maryland include the National Institute of Standards and Technology, National Security Agency, Social Security Administration, Department of Homeland Security, and Census Bureau.

Maryland ranks 3rd amongst states in educational attainment, with approximately 40% of residents having a Bachelor's degree or higher and 19% with advanced degrees. For public schools, Maryland has approximately 773 elementary schools, 213 middle schools, 182 high schools, 23 vocational-tech schools, 101 combined schools, 47 charter schools, and 93 other schools. Total public school enrollment is 881,000 students. There are 56 institutions of higher education that have a total enrollment of over 360,000 people, including 12 within the University System of Maryland. Of those, 40 are four-year institutions and 16 are two-year institutions<sup>2</sup>.

<sup>1</sup> Maryland Public School Enrollment by Race/Ethnicity and Gender and Number of Schools, 2022-2023

<sup>2</sup> Brief Economic Facts, Maryland Department of Commerce, 2022

### Child Population 2022

Age Group	Number in age group
0-2 years	205,809
3-4 years	152,669
5 years	72,489
6-8 years	224,287
9-11 years	231,904
<b>Total Children</b>	<b>887,158</b>

Source: US Bureau of the Census, American Community Survey 2022

### Child Care Costs as Compared to Other Major Household Expenses

County	Estimated Child Care Cost <sup>1</sup>	Median Family Income <sup>2</sup>	% of Median Income Spent On Child Care	Child Care Cost Ranked w/Other Major Household Exp <sup>3</sup>
Allegany	\$19,195	\$71,459	26.9%	2
Anne Arundel	\$27,403	\$136,266	20.1%	4
Baltimore City	\$22,983	\$72,972	31.5%	2
Baltimore Co.	\$25,169	\$109,514	23.0%	3
Calvert	\$23,597	\$145,175	16.3%	4
Caroline	\$15,789	\$75,994	20.8%	4
Carroll	\$23,271	\$132,514	17.6%	4
Cecil	\$18,154	\$103,315	17.6%	4
Charles	\$22,872	\$130,440	17.5%	4
Dorchester	\$16,354	\$74,254	22.0%	3
Frederick	\$25,498	\$135,543	18.8%	4
Garrett	\$14,560	\$81,575	17.8%	4
Harford	\$26,555	\$125,929	21.1%	3
Howard	\$31,799	\$169,085	18.8%	4
Kent	\$19,606	\$103,341	19.0%	4
Montgomery	\$41,210	\$152,137	27.1%	2
Prince George's	\$25,941	\$115,235	22.5%	4
Queen Anne's	\$18,725	\$124,326	15.1%	4
St. Mary's	\$22,432	\$132,926	16.9%	4
Somerset	\$15,286	\$66,255	23.1%	3
Talbot	\$18,618	\$100,321	18.6%	4
Washington	\$17,452	\$90,782	19.2%	4
Wicomico	\$18,575	\$84,504	22.0%	4
Worcester	\$17,749	\$76,689	23.1%	3
<b>Maryland</b>	<b>\$27,922</b>	<b>\$108,773</b>	<b>25.7%</b>	<b>2</b>

NOTE: Child Care and other household expenses are based on a family of 4 that included a couple and two children ages 0-23 months and 2-4 years. The household expenses considered include housing, income taxes, and food.

<sup>1</sup> Combined average of full-time care for an infant in a family child care home and a preschooler in a child care center (LOCATE, 2023). <sup>2</sup> Current income as shown in the American Community Survey 2022. <sup>3</sup> Housing costs based on U.S. Bureau of the Census ACS 2022 median selected owner costs with a mortgage; ACS 2021 iTaxes from smartassess.com

### Population Information

#### Child Population<sup>1</sup>

	2011	2022
0-2 years	215,677	205,809
3-4 years	149,276	152,669
5 years	73,189	72,489
6-8 years	216,607	224,287
9-11 years	224,348	231,904
Total	879,097	887,158

Source: US Bureau of the Census, American Community Survey 2011, 2022

#### Female Population (selected ages)

Age Group	2011	2022
Aged 20-24	190,618	185,618
Aged 25-29	197,053	203,202
Aged 30-34	186,004	214,422
Total Aged 20-34	573,675	601,513

Source: US Bureau of the Census, American Community Survey 2011, 2022

#### Work Force Information

##### Total Population Ages 16+ in Work Force

	Maryland
<b>2022</b>	
Females	1,618,655
Males	1,713,303
<b>2011</b>	
Females	1,706,926
Males	1,772,418
<b>Change</b>	
Females	-5.2%
Males	-3.3%

Source: US Bureau of the Census, American Community Survey 2011, 2022

\* Does not include the population Not in the Labor Force

#### Females (16+) with Children

Age Group	2011	2022	Change
Total Children Under 6 years old	422,297	413,845	-2.0%
Children Under 6 with all custodial parents working	300,213	304,969	1.6%
Total Children 6-17 years old	864,593	880,924	1.9%
Children 6-17 with all custodial parents working	672,897	685,892	1.9%

Source: US Bureau of the Census, American Community Survey 2011, 2022

#### Total Population

	Maryland
2022	6,161,707
2021	6,148,545
2011	5,736,545
2000	5,296,486
1990	4,780,753
1980	4,216,975

Source: US Bureau of the Census, 1980, 1990, 2000; American community Survey 2011, 2022

#### Male Population (selected ages)

Age Group	2011	2022
Aged 20-24	197,840	193,076
Aged 25-29	191,621	200,877
Aged 30-34	175,800	209,952
Total Aged 20-34	565,261	603,905

Source: US Bureau of the Census, American Community Survey 2011, 2022

#### Households

	2011	2022
Total household population	5,598,250	6,035,558
Total number of households	2,128,377	2,318,124
Average household size	2.63	2.60

Source: US Bureau of the Census, American Community Survey 2011, 2022

#### Females Aged 16+ with Children Under 18

Age Group	2011	2022	Change
Females (16+) with children under 18	656,740	589,211.0	-10.3%
Females (16+) with children under 18, in the workforce	485,688	472,371.0	-2.7%

Source: US Bureau of the Census, American Community Survey 2011, 2022

### Census Information

#### Families and Poverty

	2011	% in Poverty	2022	% in Poverty	% Change
All Families	1,428,101		1,525,066		6.8%
Families Below Poverty Level	86,544	6.1%	94,779	6.2%	9.5%
All Families with Children Under 5	272,705		255,956		-6.1%
All Families w Children Under 5 Below Poverty Level	32,625	12.0%	29,450	11.5%	-9.7%
All Families w Children Under 18	727,723		714,470		-1.8%
All Families w Children Under 18 Below Poverty Level	67,644	9.3%	68,942	9.6%	1.9%

Source: US Bureau of the Census, American Community Survey 2011, 2022

#### Children and Poverty

	2011	% in Poverty	2022	% in Poverty	% Change
Total Related Children Under 18	1,334,938		1,339,515		0.3%
Total Children Under 18 Below Poverty Level	153,486	11.5%	158,474	11.8%	3.2%
Total Children Under 5 Below Poverty Level	47,839	13.3%	43,127	12.3%	-9.8%
Children 5-17 Below Poverty Level	105,647	10.8%	115,347	11.7%	9.2%

Source: US Bureau of the Census, American Community Survey 2011, 2022

#### Educational Attainment for Adults over 25 Years

	Maryland	% of Adults
Total Adults Aged 25 or More	4,260,095	
High School Graduate or Higher	3,876,178	91.0%
Bachelors Degree or Higher	1,798,746	42.2%

Source: US Bureau of the Census, American Community Survey 2011, 2022

#### Families

Maryland	2011	2022	% Change
Total Families	1,428,101	1,525,066	6.8%
Total # of All Families with Related Childrend Under Age 6*	269,284	262,824	-2.4%
Total # of All Families with Related Childrend Under Age 18	656,740	643,101	-2.1%

Source: US Bureau of the Census, American Community Survey 2011, 2022

\*Includes Families with children under 6 AND Families with children under 6 and aged 6-17

#### Housing Information

	2011	%	2022	%
Owner-Occupied housing	1,461,708	68.7%	1,564,056	67.5%
Renter-Occupied housing	666,669	31.3%	754,068	32.5%
Mean Value of Owner-Occupied Housing	\$319,800		\$380,500	
Median Selected Monthly Owner Costs with a Mortgage	\$2,066		\$2,245	
Median Gross Residential Monthly Rent	\$1,139		\$1,598	

Source: US Bureau of the Census, American Community Survey 2011, 2022

### Income, Unemployment and Housing Information

#### Annual Wage Rate Information

Public Teacher Salary Average MD <sup>1</sup>	\$79,420
Non Public School Teacher Salary Average (National) <sup>2</sup>	\$67,201
Family Child Care Provider (County) <sup>3</sup>	\$41,936
Child Care Center Director (County) <sup>3</sup>	\$41,396
Center Senior Staff /Teacher(County) <sup>3</sup>	\$25,568
Center Aide (Count) <sup>3</sup>	\$17,402

1. Average Teacher Salary MSDE Sept 2023
2. National Association of Independent Schools (NAIS) 2022- 2023 Year
3. MFN's 2022 Statewide Survey of Family Child Care Providers and Child Care Centers.

#### Family Income

Median Family Income	2011	2022
Maryland	\$87,233	\$98,461.00

Source: US Bureau of the Census, American Community Survey 2011, 2022

Median Household Income <sup>1</sup> :	2011	2022
Maryland	\$72,419	\$98,461

Income Distribution	Percent Households Maryland	
Under \$25,000	15.1%	11.6%
\$25,000-\$49,999	18.8%	13.2%
\$50,000-\$74,999	17.7%	13.6%
\$75,000 +	48.4%	61.6%
Total Households	2,128,377	2,318,124

Source: US Bureau of the Census, American Community Survey 2011, 2022

#### Average Weekly Cost of Full-time Child Care

Programs	Family Child Care	Child Care Centers
0-23 Months	\$267.48	\$372.12
2-4 Years	\$232.56	\$273.60
5 years <sup>1</sup>	\$213.44	\$260.35
School Age Full <sup>2</sup>	\$190.73	\$232.82
School Age B/A <sup>3</sup>	\$135.78	\$143.41

- Source: MFN/LOCATE: Child Care, 6/23.
- <sup>1</sup>Average cost of full time care for a 5 year old. Defined as child being in full time child care or being in kindergarten and out-of-school child care, i.e., holidays, school closures and summers.
  - <sup>2</sup>Average cost of full time care for a 6+ school age child (out-of-school child care, i.e., holidays, school closures and summers).
  - <sup>3</sup>Average cost of before and after school child care.

#### Unemployment Rate

Maryland	
2000	3.4%
2001	4.0%
2002	3.9%
2003	4.1%
2004	3.9%
2005	3.9%
2006	3.7%
2007	3.6%
2008	4.5%
2009	7.1%
2010	7.3%
2011	7.2%
2012	6.5%
2013	6.2%
2014	5.6%
2015	5.0%
2016	4.5%
2017	4.3%
2018	4.5%
2019	3.9%
2020	8.3%
2021	6.2%
2022	3.7%
2023	1.7%

MD Department of Labor Local Area Unemployment Statistics (LAUS) June 2023.

### Supply of Regulated Early Childhood Programs and Education

#### Children's Programs by Type with Capacity/ Enrollment

	# of Programs	Capacity <sup>1</sup>
Family Child Care Providers	4,502	35,258
*OCC Licensed Group Programs	2,778	180,406
8-12 Hour Child Care Centers	1,830	13,2370
Infant/Toddler	937	8,262
Part-Day	308	N/A
Before/after School (School & Center-Based)	1,769	117,507
Employer-Sponsored Centers	47	3,389
Nursery Schools	438	N/A
Public Kindergarten	179	N/A
** Head Start	149	6,838
***Early Head Start	44	1,639
****Public Pre-Kindergarten Sites	654	N/A
<b>Total Infant/Toddler programs</b>	<b>4,350</b>	<b>9,712</b>

<sup>1</sup>Note: Numbers do not total because facilities may have more than one type of program. Unless otherwise indicated, all programs are privately funded.

\*\* Federally funded programs which include Head Start, Early Head Start and Home-based Head Start.

\*\*\*State funded.

Source: MFN/LOCATE Child Care, 6/23; Maryland State Department of Education; Department of Health and Mental Hygiene.

#### Education

##### Public and Private Schools (Elementary and Middle)

	Public	Private*
Elementary Schools	773	85
Middle Schools	213	5
Combined	101	446

##### Elementary School Enrollment

	Public	Private*
Pre-Kindergarten	30,718	9,296
Kindergarten	60,986	8,672
Grades 1 - 6	388,058	48,748
<b>Total</b>	<b>479,762</b>	<b>66,716</b>

Source: MSDE, 2022-23 school year. Enrollment figures are for September 30, 2022.  
\*Self reported data from Maryland Nonpublic Schools as reported to MSDE.

#### Density of Family Providers and Center Programs by Jurisdiction

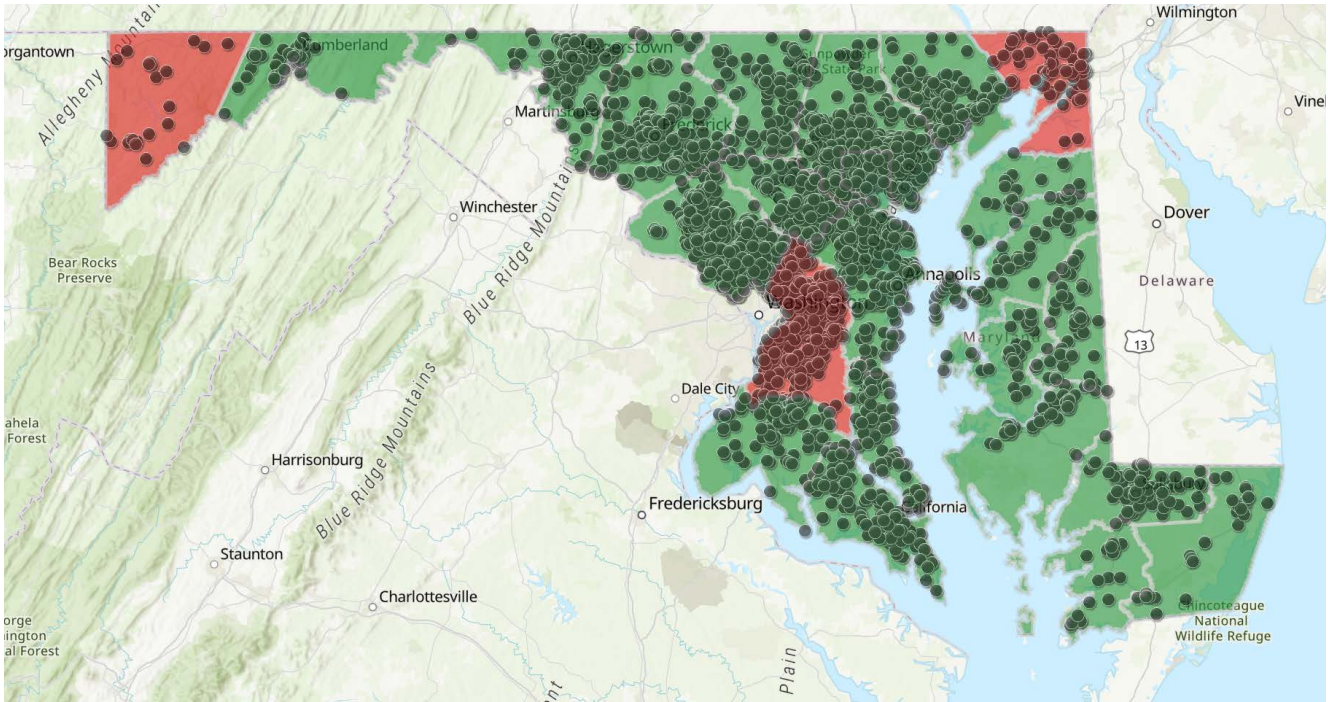
The following chart shows the number of registered family child care providers and licensed full-day child care centers in Maryland as of June 30, 2023.

Jurisdiction	Family Providers	Capacity	8-12 Hour Centers	Capacity
Allegany	39	324	14	770
Anne Arundel	351	2,722	149	12,635
Baltimore City	418	3,242	209	9,314
Baltimore County	572	4,490	280	20,810
Calvert	74	602	33	1,822
Caroline	57	444	7	322
Carroll	93	714	47	4,070
Cecil	60	465	24	1,385
Charles	154	1,183	45	3,559
Dorchester	48	382	11	379
Frederick	270	2,073	70	5,823
Garrett	10	87	9	212
Harford	201	1,576	59	5,216
Howard	264	2,024	123	9,738
Kent	18	142	6	247
Montgomery	779	6,209	368	29,745
Prince Georges	634	5,022	244	17,045
Queen Anne's	64	474	12	821
Saint Mary's	124	962	24	1,639
Somerset	18	138	4	167
Talbot	37	295	16	1,012
Washington	117	912	36	2,435
Wicomico	80	623	29	2,412
Worcester	20	153	11	792
<b>Totals</b>	<b>4,502</b>	<b>35,258</b>	<b>1,830</b>	<b>132,370</b>

Source: MFN/LOCATE: Child Care, 6/23.

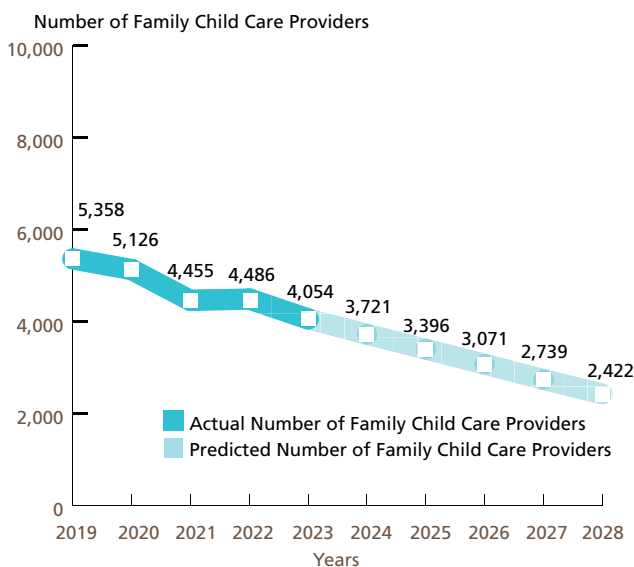
### Supply of Regulated Early Childhood Programs and Education

Maryland Family Network and Upfront partnered to create a [real-time map](#) of Maryland's child care landscape to identify deserts by county, legislative, and congressional districts.

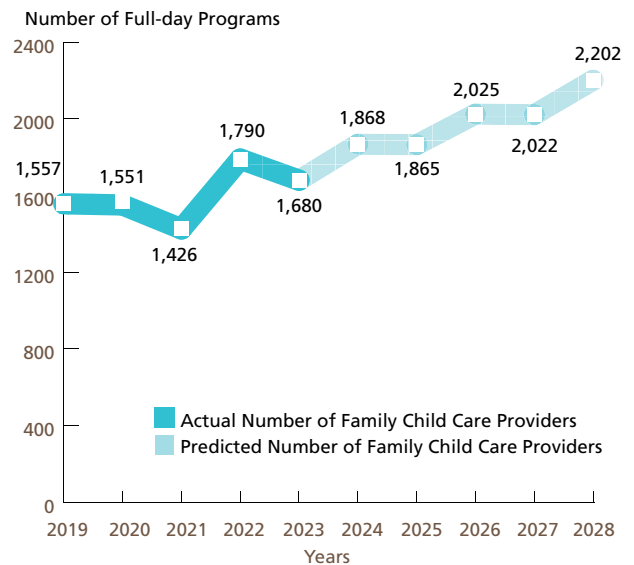


### Past and Anticipated Growth Patterns for Family/Center Providers

Family Child Care Providers in Maryland 2019-2028



Center-based Programs in Maryland 2019-2028 Full-day (8 to 12 hours)

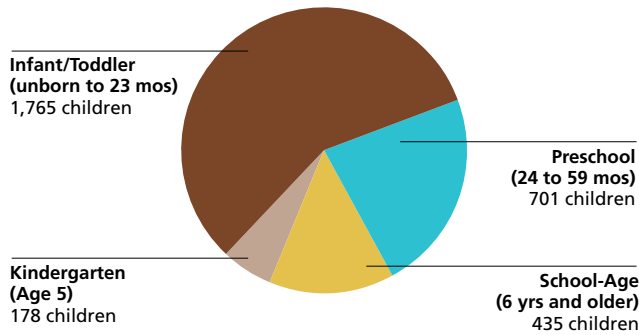


These predictions were generated with the use of the Multiple Regression Analysis and Forecasting template. The predictions generated by the Model do not reflect the effects of current changes to social programs affecting child care.  
Source: MFN/LOCATE: Child Care, 6/23.

### Demand for Child Care

#### Children Served by Age

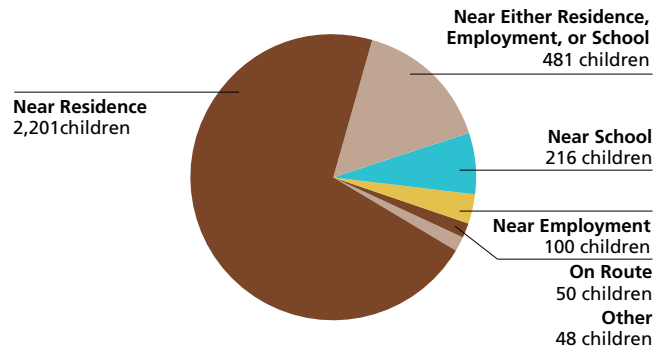
N=3,079



Source: LOCATE: Child Care at Maryland Family Network, Baltimore (7/1/22-6/30/23).

#### Children Served by Locational Preferences for Care

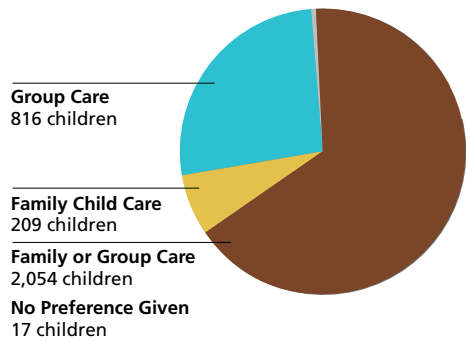
N=3,096



Source: LOCATE: Child Care at Maryland Family Network, Baltimore (7/1/22-6/30/23).

#### Children Served by Type of Care Preferred

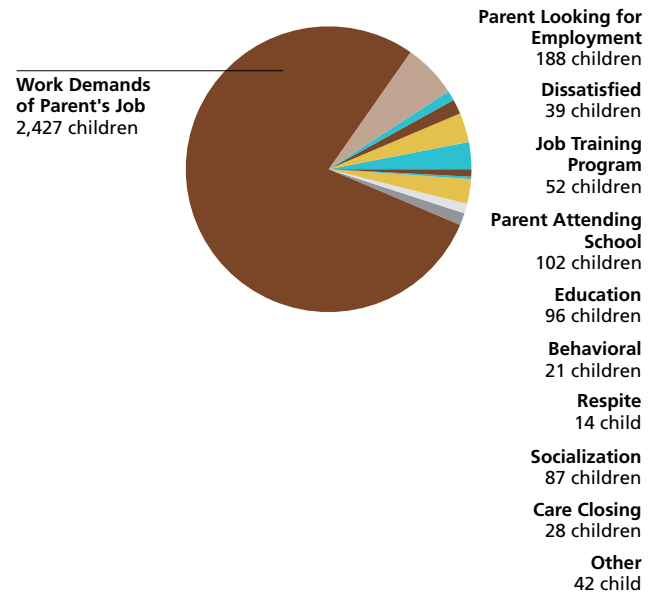
N=3,096



Source: LOCATE: Child Care at Maryland Family Network, Baltimore (7/1/22-6/30/23).

#### Reason Child Care is Needed

N=3,094



Source: LOCATE: Child Care at Maryland Family Network, Baltimore (7/1/22-6/30/23).



### Demand for Child Care

**Number of Children Served by LOCATE: Child Care**  
3,096 children (7/1/22-6/30/23)

**Full-time or Part-time Care Needs of Children Served** N=3,096

Full-time: 2,388 children

Part-time: 617 children

Other\*: 91 children

\* Includes requests for sick, backup and temporary care.

Source: LOCATE: Child Care at Maryland Family Network, Baltimore (7/1/22-6/30/23).

### Child Care Scholarship Program (CCS)\*

**LOCATE Calls received from parents with children eligible for Child Care Scholarship**  
759 (25% of all calls)

**LOCATE Calls received from parents with children receiving Child Care Scholarship**  
1,143 (37% of all calls)

Source: LOCATE: Child Care at Maryland Family Network, Baltimore (7/1/22-6/30/23).

\* Formerly Child Care Subsidy Program\* Formerly Child Care Subsidy Program

### Supply of Child Care

#### Child Care Scholarship Program (CCS)\*

**Family Child Care Providers willing to care for CCS children in Maryland**

1,789 (40% of total family child care providers)

**Child Care Centers willing to care for CCS children in Maryland**

1,091 (60% of total child care centers)

LOCATE: Child Care at Maryland Family Network Baltimore, June 2022.

\* Formerly Child Care Subsidy Program

#### Maryland FY23 Allocation (estimated)

\$138,065,136 = 16,693 full-time children enrolled

Source: Maryland State Department of Education, Office of Child Care.

#### Special Needs Child Care

**Family providers who serve/have served children with special needs<sup>1</sup>**

1,290 (29% of total family child care providers in Maryland)

**Centers who serve/have served children with special needs**

726 (16% of total child care centers in Maryland)

Source: LOCATE: Child Care at Maryland Family Network, Baltimore (7/1/22-6/30/23).

<sup>1</sup>In 2023, LOCATE: Child Care changed the method of tracking providers with Special Needs Experience. Providers now are able to indicate experience with individual special needs. In 2024 and future years, this number will increase as we identify those providers. This number cannot be compared to earlier Demographics.

### Definitions

**The American Community Survey (ACS):** is an ongoing survey that provides vital information on a yearly basis about our nation and its people. Information from the survey generates data that help inform how trillions of dollars in federal funds are distributed each year. (Census.gov)

**Before/After-School Care:** School-Age child care offers care to children enrolled in Kindergarten or above. Care is provided before and/or after school and during school holidays/vacations. Programs are licensed by the Office of Child Care. Programs may operate from a school building or other licensed facility.

**Census of Population and Housing:** There are two versions of the Census questionnaire: a short form which asks a limited number of population and housing questions of all households, and a long form questionnaire which asks additional social and economic questions of a sample of all households. The user should note that data obtained from a sample are subject to sampling variability, and that there are limitations to many of these data.

**Child Care:** The care or supervision of a child when the child's parent has given the child's care over to another for some portion of a 24-hour-day as a supplement to the parent's primary care of the child. (OCC)

**Child Care Center:** Child care provided in a facility that, for part or all of the day, provides care to children in the absence of the parent. Centers are licensed by the Office of Child Care.

**Child Care Scholarship Program (CCS)\*:** Provides financial assistance to eligible families in securing care for their children in registered family child care homes or licensed child care centers while parents/guardians are attending school, working, or in job training.

**Children with Special Needs:** Children who, because of a disability or other special educational, developmental, physical, emotional, behavioral, or medical condition, require additional care, or whose activities are restricted by a certain condition. (OCC)

**Current Median Family Income:** Current, median family income is from the American Community Survey 2022.

**Current Population Estimates:** Current Population Estimates are based on the American Community Survey 2022.

**Educational Attainment:** The highest level of school completed or the highest degree received. Educational attainment figures were used for persons over 25 years of age. (U.S. Bureau of the Census)

**Employer-Sponsored Centers:** A child care center located on-site or off-site which is sponsored by a corporation,

business, or other employer. Employees are given priority for enrollment slots.

**Family Child Care:** The care given to a child younger than 13 years old or to a developmentally disabled person younger than 21 years old, in place of parental care for less than 24 hours a day, in a residence other than the child's residence and for which the provider is paid. Regulations allow a family child care provider to care for as many as eight children at any time. (OCC)

**Family Household Income:** Family includes a householder and one or more persons living in the same household who are related to the householder by birth, marriage, or adoption. A household can contain only one family for purposes of census tabulations. (U.S. Bureau of the Census)

**Head Start:** Project Head Start provides comprehensive developmental services for children from low-income families. Head Start is comprised of four components including Education, Health, Parent Involvement, and Social Services. Head Start Centers serve children from age 3 to school entry age from income eligible families.

**Infant/Toddler:** In the State of Maryland, "infant" means a child under 18 months old. "Toddler" means a child 18 months old or older but younger than 2 years old. (OCC) MFN reports "infant" as a child birth through 23 months of age.

**Kindergarten:** An instructional program for children who are 5 years old by September 1st of each academic year. Programs may be operated by a private or public school. Kindergarten is the year of school which precedes entrance to first grade.

**Nursery Schools:** An instructional program approved or exempted by the Maryland State Department of Education for children who are two through four years old. The maximum length of the program is 6 hours per day, however most operate only a few hours per day and may meet only two or three times per week for a nine month period.

**Owner Costs with Mortgage (Selected Monthly):** The sum of payments for mortgages, deeds of trust, contracts to purchase, or similar debts on the property; real estate taxes; fire hazard, and flood insurance on the property; utilities; and fuels. It also includes, where appropriate, the monthly condominium fees or mobile home costs. A housing unit is owner-occupied if the owner or co-owner lives in the unit even if it is mortgaged or not fully paid for. (U.S. Bureau of the Census)

## Definitions

**Part Day:** A program regulated by OCC with an educational focus for children one or two years before entering kindergarten. These programs are usually 2-3 hrs/day, 2-3 days/week, nine months/year.

**Pre-Kindergarten:** These are publicly funded pre-kindergarten programs for eligible 4-year-old children administered by local boards of education or qualified vendors. The programs have the overall goal of providing learning experiences to help children develop and maintain school readiness skills necessary for successful school performance. Local school systems shall enroll all 4-year-old applicants from economically disadvantaged or homeless families.

**Poverty Level:** The poverty guideline for a family of four persons was \$30,000 in 2022. (U.S. Department of Health and Human Services, Jan 2021)

**Renter Occupied Gross Monthly Rent:** Monthly contract rent plus the estimated average monthly cost of utilities and fuels, if these are paid by the renter. All occupied housing units which are not owner-occupied, whether they are rented for cash rent or occupied without payment of cash rent, are classified as renter-occupied. (U.S. Bureau of the Census)

**Unemployment Rate:** Civilians 16 years old and over are classified unemployed if they (1) were neither “at work” nor “with a job but not at work” during the reference week, and (2) were looking for work during the last four weeks, and (3) were available to accept a job. Also included were civilians who did not work at all during the reference week and were waiting to be called back to a job from which they had been laid off. (U.S. Bureau of the Census)

The Maryland Child Care Resource Network is a public/private partnership designed to expand and improve child care delivery in Maryland. Maryland Family Network manages the Network and operates as its Statewide Coordinating Entity. Funding for this publication was made available by Maryland Family Network, the Maryland State Department of Education, and Maryland's business community.

For more information regarding the Child Care Demographic Reports, contact:

**Maryland Family Network**

1800 Washington Blvd, Ste 445  
Baltimore, Maryland 21230-2344  
tel 410.659.7701 fax 410.783.0814  
[www.marylandfamilynetwork.org](http://www.marylandfamilynetwork.org)

*This publication was produced as a work for hire for the benefit of, and with funds from, the Maryland State Department of Education.*

©2024 Maryland State Department of Education

©2024 Maryland Family Network

Find your local county report here:



**MARYLAND CHILD CARE  
RESOURCE NETWORK**

The Maryland Child Care Resource Network is a public/private partnership designed to expand and improve child care delivery in Maryland. Maryland Family Network manages the Network and operates as its Statewide Coordinating Entity.



This publication was produced as a work for hire for the benefit of, and with funds from, the Maryland State Department of Education.

Content revised January 2024



**MARYLAND  
FAMILY  
NETWORK**

1800 WASHINGTON BLVD, STE 445  
BALTIMORE, MARYLAND 21230-2344  
tel 410.659.7701 fax 410.783.0814

[marylandfamilynetwork.org](http://marylandfamilynetwork.org)